

MICHIGAN STATE UNIVERSITY

STATISTICAL REPORT
January 2004

OISS

MSU

Office for **I**nternational **S**tudents and **S**cholars

Michigan State University

Office for International Students and Scholars

Statistical Report

January 2004



Office for International Students and Scholars

103 International Center
East Lansing, MI 48824
Ph. 517.353.1720
Fx. 517.355.4657
oiss@msu.edu

www.isp.msu.edu/oiss

Summary

I am pleased to present you with this statistical report on international students and scholars at Michigan State University. The Office for International Students and Scholars (OISS) is responsible for serving MSU's international community and prepares this data annually.

Below are some general observations of this year's data:

1. Enrollment numbers:

- There was an overall 2.3% increase in the number of international students over Fall 2002. This increase was above the U.S. national average of 1% for the same period of time.
- The enrollment of international graduate students remained almost unchanged. International graduate students consist of 32.3% of the total number of MSU graduate students.
- The number of undergraduate international students increased by 8.2% from 967 to 1,046. International students are 3.0% of MSU's undergraduate enrollment.
- In Fall 2003, international students represented 7.4% of all MSU students.

2. Sending countries:

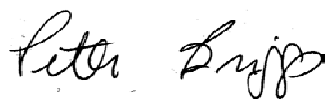
- Asia is by far the region of the world that sends the most international students. More than 50% of MSU's international students come from five countries: Korea (678), China (525), India (374), Japan (169) and Taiwan (148).
- Canadian students increased by 22.4% from 156 to 191 from academic year 2002 to 2003.
- In Fall 2003, students came from 123 countries compared to 126 in Fall 2002.

3. The Colleges of Business (577), Engineering (602), Natural Science (557) and Agriculture and Natural Resources (328) enroll the largest number of international students.

4. The number of visiting scholars this past year was 766, representing 83 countries.

5. MSU's international students and scholars contributed more than \$90 million to the economy of greater Lansing according to the Institute of International Education's formula for calculating the economic impact of international students.

This report was compiled and organized by Ravi Ammigan, International Advisor, and Tami Renner, Graduate Intern, in OISS. Special thanks go to Lucille Wright in the Office of the Registrar and Nancy Rademacher in OISS for their assistance in preparing this data.



Peter Briggs
Director

OISS STAFF

Peter Briggs
Director

Rosemary Max
Assistant Director

Nancy Rademacher
Office Manager

Ravi Ammigan
Advisor

Peggy Arbanas
Advisor

Christine Bargerstock
Immigration Specialist

Mary Gebbia
Sponsored Student
Coordinator

Ghazala Khan
Advisor

Roberta Clark
Secretary

Krista Oesterle
Secretary

Shelley Sander
Secretary

Tami Renner
Graduate Intern

Harsh Singh
Intern

International Student Population

By Country and Level of Study

Fall 2003

International Students by Country and Level of Study - FALL 2003

Country	MSU Int'l Population			
	Undergrad	Grad	Total	% MSU Int'l
Albania	0	3	3	0.1%
Algeria	0	1	1	0.0%
Argentina	4	18	22	0.7%
Armenia	0	3	3	0.1%
Australia	9	10	19	0.6%
Austria	0	1	1	0.0%
Azerbaijan	0	1	1	0.0%
Bahamas	0	1	1	0.0%
Bangladesh	1	6	7	0.2%
Barbados	0	2	2	0.1%
Belgium	0	1	1	0.0%
Belize	1	0	1	0.0%
Benin	0	1	1	0.0%
Bolivia	4	1	5	0.2%
Bosnia-Herzegovina	0	1	1	0.0%
Botswana	0	7	7	0.2%
Brazil	14	23	37	1.1%
Bulgaria	0	4	4	0.1%
Burma	1	1	2	0.1%
Cameroon	1	1	2	0.1%
Canada	43	78	121	3.7%
Chile	1	11	12	0.4%
China	42	483	525	16.0%
Colombia	2	13	15	0.5%
Costa Rica	1	3	4	0.1%
Cote D'Ivoire	4	0	4	0.1%
Croatia	0	1	1	0.0%
Cyprus	3	3	6	0.2%
Czech Republic	1	5	6	0.2%
Denmark	0	2	2	0.1%
Dominican Republic	1	1	2	0.1%
Ecuador	5	5	10	0.3%
Egypt	2	15	17	0.5%
El Salvador	1	0	1	0.0%
Ethiopia	3	4	7	0.2%
Finland	1	1	2	0.1%
France	7	17	24	0.7%
Georgia	2	6	8	0.2%
Germany	15	30	45	1.4%
Ghana	3	17	20	0.6%
Greece	1	16	17	0.5%
Guatemala	3	5	8	0.2%
Haiti	1	1	2	0.1%
Honduras	4	4	8	0.2%
Hong Kong	52	11	63	1.9%
Hungary	0	2	2	0.1%
India	76	298	374	11.4%
Indonesia	26	23	49	1.5%
Iran	1	20	21	0.6%
Iraq	1	0	1	0.0%
Ireland	4	3	7	0.2%

	Underg	Grad	Total	% MSU
Israel	0	8	8	0.2%
Italy	2	8	10	0.3%
Jamaica	2	9	11	0.3%
Japan	84	85	169	5.2%
Jordan	5	15	20	0.6%
Kampuchea (Cambodia)	1	1	2	0.1%
Kazakhstan	3	1	4	0.1%
Kenya	11	22	33	1.0%
Korea	314	364	678	20.7%
Kuwait	7	2	9	0.3%
Kyrgyzstan	0	1	1	0.0%
Lebanon	2	6	8	0.2%
Lithuania	0	3	3	0.1%
Macau	3	0	3	0.1%
Macedonia	0	1	1	0.0%
Malawi	0	2	2	0.1%
Malaysia	31	22	53	1.6%
Mali	3	0	3	0.1%
Mexico	8	22	30	0.9%
Moldova	0	2	2	0.1%
Mozambique	0	4	4	0.1%
Namibia	1	1	2	0.1%
Nepal	0	13	13	0.4%
Netherlands	6	8	14	0.4%
New Zealand	2	7	9	0.3%
Nicaragua	2	1	3	0.1%
Nigeria	14	10	24	0.7%
Norway	3	3	6	0.2%
Oman	1	0	1	0.0%
Pakistan	24	18	42	1.3%
Panama	3	1	4	0.1%
Paraguay	0	3	3	0.1%
Peru	3	8	11	0.3%
Philippines	4	21	25	0.8%
Poland	4	3	7	0.2%
Qatar	4	0	4	0.1%
Romania	1	18	19	0.6%
Russia	2	28	30	0.9%
Rwanda	0	10	10	0.3%
Saint Lucia	1	0	1	0.0%
Saudi Arabia	23	6	29	0.9%
Senegal	0	2	2	0.1%
Sierra Leone	0	1	1	0.0%
Singapore	11	13	24	0.7%
Slovak Republic	0	5	5	0.2%
Slovenia	0	2	2	0.1%
South Africa	2	10	12	0.4%
Spain	1	11	12	0.4%
Sri Lanka	0	9	9	0.3%
Swaziland	0	1	1	0.0%
Sweden	3	2	5	0.2%
Switzerland	0	2	2	0.1%
Syria	1	0	1	0.0%
Taiwan	4	103	148	4.5%

	Underg	Grad	Total	% MSU
Tanzania	0	1	1	0.0%
Thailand	8	37	45	1.4%
Togo	0	1	1	0.0%
Trinidad & Tobago	0	4	4	0.1%
Turkey	22	52	74	2.3%
Uganda	0	1	1	0.0%
Ukraine	2	9	11	0.3%
United Arab Emir.	7	0	7	0.2%
United Kingdom	14	21	35	1.1%
Uruguay	2	9	11	0.3%
Uzbekistan	2	2	4	0.1%
Venezuela	5	7	12	0.4%
Vietnam	0	5	5	0.2%
West Bank	0	1	1	0.0%
Yugoslavia, Former	0	5	5	0.2%
Zaire (Congo)	0	1	1	0.0%
Zambia	1	2	3	0.1%
Zimbabwe	5	12	17	0.5%
	1046	2232	3278	

International Student Population

By Country, Gender, and Level of Study

Academic Year 2002 - 2003

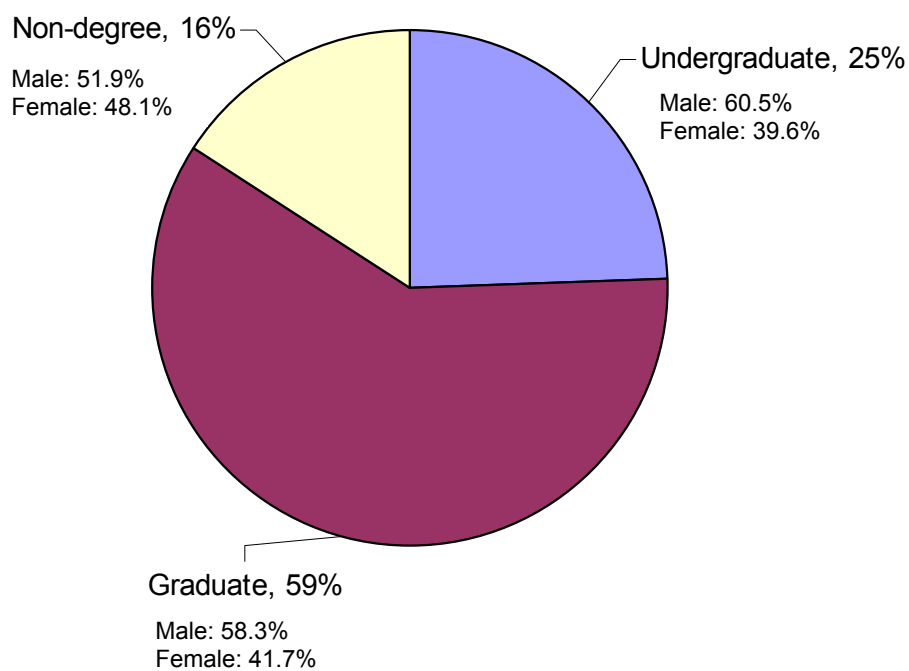
International Students by Country, Gender, and Level: Academic Year 2002 - 2003

Country	Undergraduate			Graduate			Non-Degree		
	Male	Female	Subtotal	Male	Female	SubTotal	Male	Female	SubTotal
Albania		1	1	1	4	5			
Algeria	1		1						
Argentina	3	1	4	11	4	15			
Armenia				2		2		1	1
Australia	1	6	7	5	4	9	5	2	7
Austria				1		1	1		1
Azerbaijan					1	1			
Bahamas					1	1			
Bangladesh	1	1	2	1	2	3			
Barbados				1	1	2			
Belarus								1	1
Belgium				1		1	3	1	4
Benin				1		1			
Bolivia	2		2						
Bosnia-Herzegovina					1	1			
Botswana	1		1	1	5	6			
Brazil	8	2	10	21	10	31	1	1	2
Bulgaria				2	2	4	1	1	2
Burma (Myanmar)		1	1		1	1			
Cameroon	1		1	1		1	1		1
Canada	35	19	54	46	36	82	23	32	55
Chile	1		1	7	8	15	1		1
China	18	18	36	246	215	461	10	22	32
Colombia	2		2	8	7	15	1	2	3
Costa Rica	2		2	2	1	3		1	1
Cote D'Ivoire	2	2	4						
Croatia				1		1		2	2
Cyprus	3	1	4	1	1	2			
Czech Republic	1		1	1	2	3			
Denmark				1	1	2	2	4	6
Dominican Republic	2		2	1		1			
Ecuador	4		4	4	2	6	6	3	9
Egypt	2		2	12	2	14	2		2
Eritrea				1		1			
Estonia				1		1			
Ethiopia	2	1	3	2	2	4		1	1
Finland							1	2	3
France	1	1	2	8	7	15	7	5	12
Georgia		1	1	1	3	4			
Germany	2	4	6	19	5	24	12	15	27
Ghana	2	1	3	3	1	4	1		1
Greece	1		1	11	7	18			
Guatemala		2	2	3	1	4			
Haiti					1	1			
Honduras	2	1	3	2		2			
Hong Kong	19	31	50	5	7	12	4	2	6
Hungary		1	1	1	2	3		1	1
Iceland				1		1	1		1
India	52	15	67	224	107	331	8	5	13
Indonesia	15	17	32	15	6	21	4	4	8
Iran		1	1	18	5	23			
Ireland				2		2	3	3	6
Israel	1		1	4		4	2	4	6
Italy	2	1	3	5	1	6		2	2
Jamaica	1	3	4	1	4	5	6	3	9
Japan	33	39	72	31	50	81	27	33	60
Jordan	3	1	4	9	1	10	1		1
Kampuchea		1	1	1		1			

	UG-M	UG-F	Subtotal	Grad-M	Grad-F	Subtotal	ND-M	ND-F	Subtotal
Kazakhstan		1	1						
Kenya	8	4	12	13	10	23	5	4	9
Korea, Republic of	156	95	251	223	154	377	95	61	156
Kuwait	6		6		1	1		1	1
Kyrgyzstan							1		1
Lebanon	7		7	5	1	6	1		1
Lithuania				2		2			
Macau		2	2						
Macedonia								1	1
Malawi				2		2			
Malaysia	17	13	30	9	13	22		1	1
Mali	2	1	3						
Mexico	2	1		11	9	20	10	3	13
Moldova				1		1		1	1
Morocco	1		1	1		1			
Mozambique				4	1	5			
Namibia					1	1			
Nepal				11		11	1		1
	1	3	4	5	5	10	3		3
Netherlands Antilles		1	1						
New Zealand	1		1	3	3	6			
Nicaragua		1	1						
Niger		1	1						
Nigeria	8	7	15	3	4	7	2		2
Norway	1		1				2	4	6
Oman	2		2						
Pakistan	22	4	26	23	6	29	2		2
Panama	2	1	3		1	1			
Paraguay				1	1	2		1	1
Peru	2	1	3	6	2	8		1	1
Philippines	1	1	2	9	13	22	1	2	3
Poland		3	3	3	2	5	2		2
Portugal				1		1		1	1
Qatar	2	1	3				1		1
Romania	1		1	10	8	18		1	1
Russia				18	13	31	7	3	10
Rwanda				9		12			
Saint Lucia					1	1	1		1
Saudi Arabia	22	1	23	8		8	6	4	10
Senegal				2		2			
Sierra Leone				1		1			
Singapore	4	8	12	6	8	14	4	1	5
Slovak Republic				3	2	5			
Slovenia	1		1	2	1	3		1	1
South Africa	2		2	6	5	11		2	2
Spain	1		1	7	3	10	2	1	3
Sri Lanka				4	6	10		1	1
Swaziland					1	1		1	1
Sweden		1	3						
Switzerland				1	1	2	1		1
Syria	1		1		1	1			
Taiwan	15	28	43	43	75	118	9	14	23
Tanzania	1		1	1		1	1		1
Thailand	3	3	6	24	26	50	3	10	13
Trinidad and Tobago				2	1	3			
Turkey	16	2	18	43	19	62	3		3
Uganda					1	1		1	1
Ukraine	1		1	5	3	8	1	2	3
United Arab Emirates	9		9		1	1		1	1
United Kingdom	6	2	8	11	2	13	11	9	20

	UG-M	UG-F	Subtotal	Grad-M	Grad-F	Subtotal	ND-M	ND-F	Subtotal
Uruguay	1		1	5	3	8			
Uzbekistan	1		1						
Venezuela	4	3	7	7	1	8			
Vietnam				1		1			
West Bank					1	1			
Yemen							1		1
Yugoslavia, Former				4	1	5		1	1
Zambia	1	1	2	1	1	2			
Zimbabwe	2	4	6	8	6	14			
	561	367	928	1315	942	2257	310	287	597

**International Students by Gender and Level of Study
Academic Year 2002 - 2003**



International Student Population

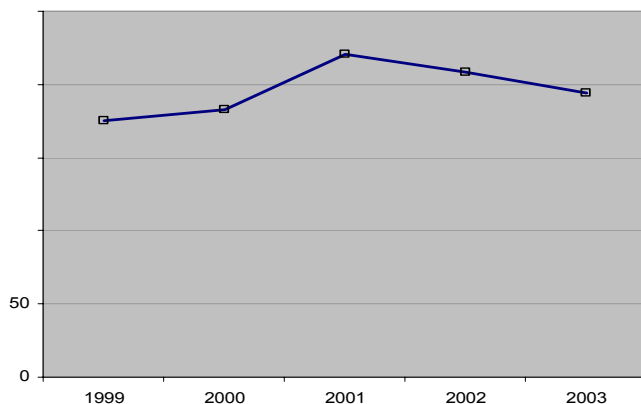
By Country and Region

**Regional Trends
Academic Years 1999 - 2003**

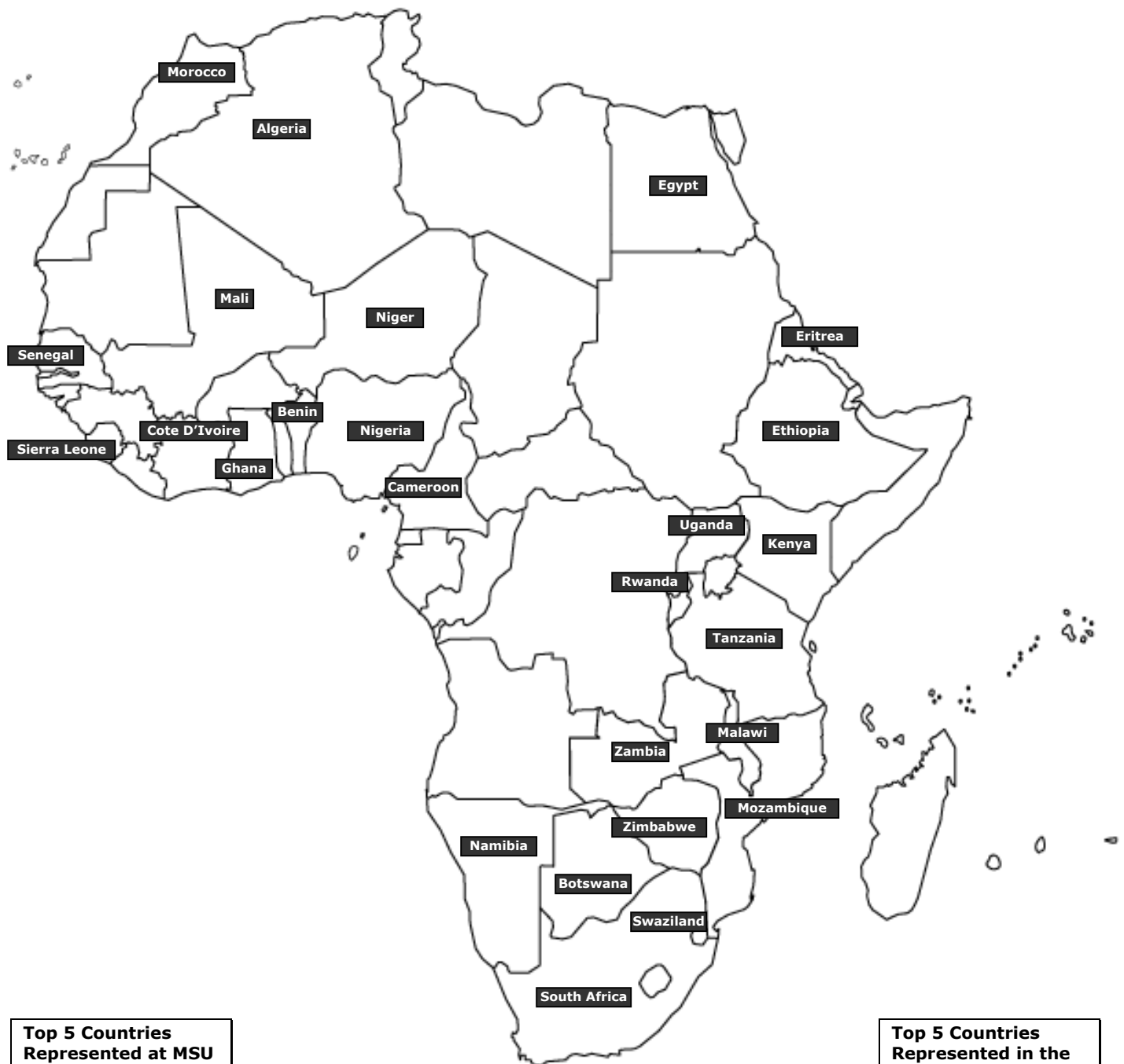
International Students by Country of Origin: AFRICA

Academic Years

	1999	2000	2001	2002	2003
East Africa					
Burundi	0	0	1	1	0
Eritrea	0	1	1	1	1
Ethiopia	11	12	13	11	8
Kenya	32	32	39	56	44
Madagascar	4	4	5	0	0
Malawi	3	3	4	5	2
Mozambique	2	3	2	2	5
Rwanda	0	1	10	12	12
Somalia	1	0	0	0	0
Tanzania	1	2	3	2	3
Uganda	1	1	2	2	2
Zambia	1	3	3	2	4
Zimbabwe	14	15	19	17	20
Central Africa					
Cameroon	2	2	2	3	3
Zaire (Congo)	0	0	1	1	0
North Africa					
Algeria	1	0	0	1	1
Egypt	15	15	18	17	18
Morocco	6	5	4	4	2
Sudan	2	3	2	1	0
Tunisia	4	5	5	2	0
Southern Africa					
Botswana	12	9	7	7	7
Namibia	2	1	2	0	1
South Africa	19	24	32	17	15
Swaziland	0	0	0	2	2
West Africa					
Benin	1	1	1	1	1
Burkina Faso	1	1	1	1	0
Cote D'Ivoire	3	4	3	2	4
Gambia	0	1	1	0	0
Ghana	8	5	6	7	8
Guinea	3	2	1	0	0
Mali	1	5	4	5	3
Niger	0	1	2	2	1
Nigeria	20	19	21	18	24
Senegal	4	3	3	5	2
Sierra Leone	1	0	3	1	1
	175	183	221	208	194



International Students by Country of Origin in Academic Year 2002 - 2003: AFRICA



Top 5 Countries Represented at MSU (2003):

- Kenya
- Nigeria
- Zimbabwe
- Egypt
- South Africa

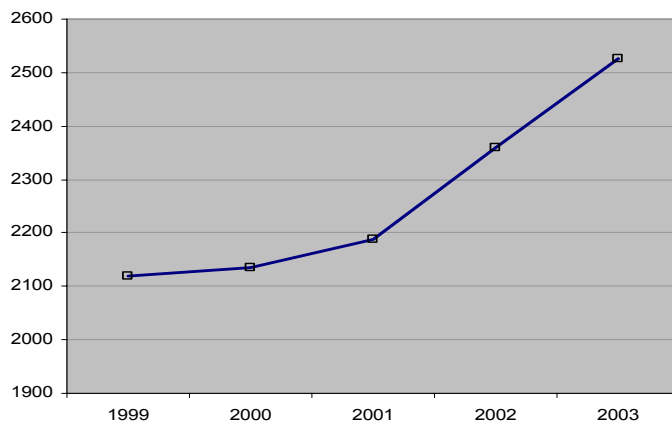
Top 5 Countries Represented in the U.S. (2003):

- Kenya
- Nigeria
- Ghana
- Zimbabwe
- Egypt

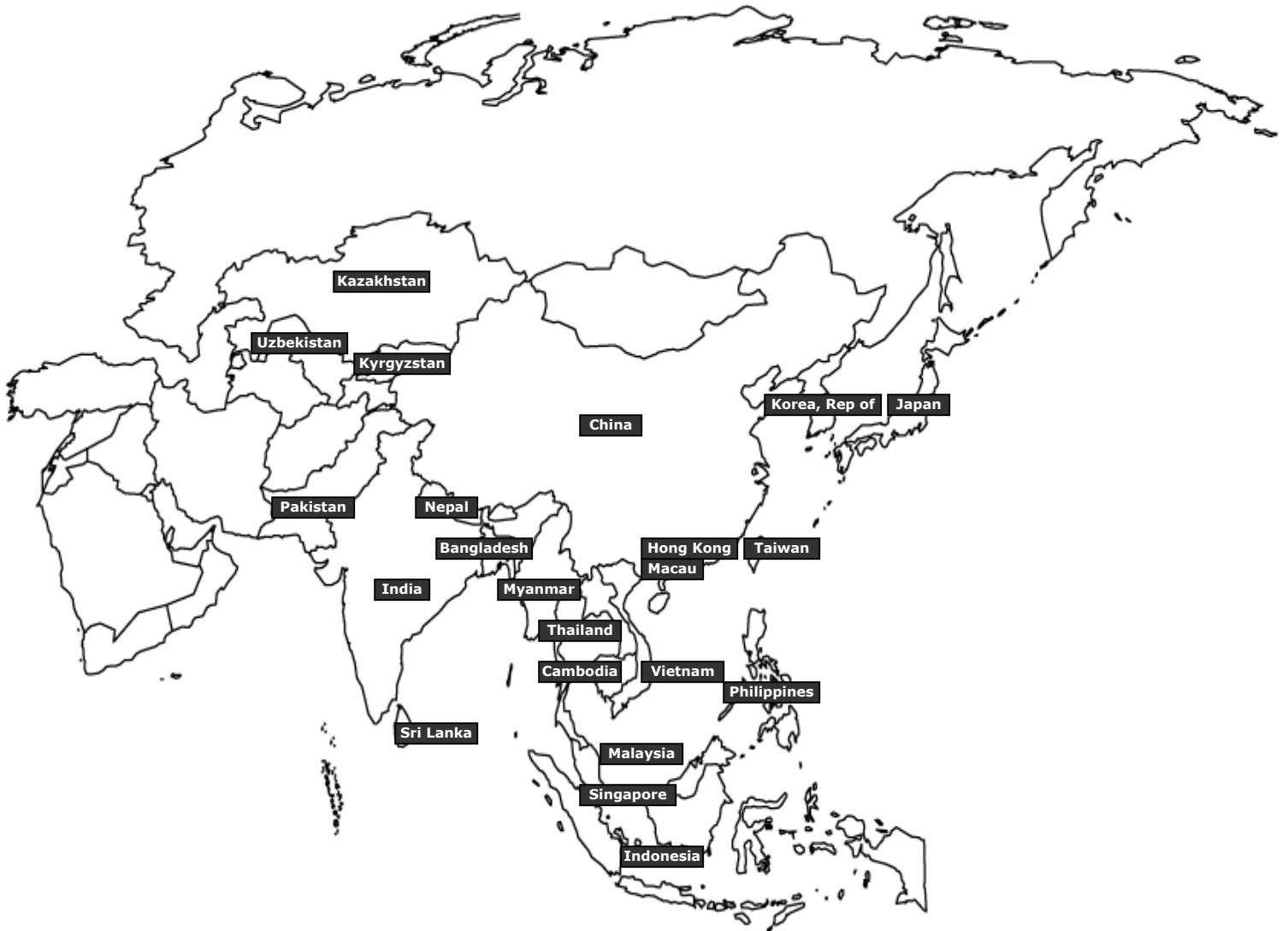
International Students by Country of Origin: ASIA

Academic Years

	1999	2000	2001	2002	2003
East Asia					
China	379	405	412	478	529
Hong Kong	66	63	73	68	68
Japan	222	197	179	201	213
Korea, Republic of	600	609	659	711	784
Macau	0	1	1	1	2
Taiwan	232	205	179	182	184
South & Central Asia					
Bangladesh	7	7	8	7	5
Bhutan	0	0	1	1	0
India	236	278	305	344	411
Kazakhstan	0	0	1	1	1
Kyrgyzstan	0	0	0	0	1
Nepal	4	7	11	15	12
Pakistan	55	60	76	68	57
Sri Lanka	5	7	10	13	11
Tajikistan	2	1	1	0	0
Uzbekistan	0	3	2	3	1
Southeast Asia					
Burma (Myanmar)	0	0	0	1	2
Indonesia	62	65	64	60	61
Kampuchea (Cambodia)	0	0	0	1	2
Laos	0	1	1	1	0
Malaysia	72	49	56	57	53
Philippines	22	22	18	21	27
Singapore	34	33	28	27	31
Thailand	120	120	102	95	69
Vietnam	1	2	2	3	1
	2119	2135	2189	2359	2525



International Students by Country of Origin in Academic Year 2002 - 2003: ASIA



Top 5 Countries Represented at MSU (2003):

- Korea, Republic of
- China
- India
- Japan
- Taiwan

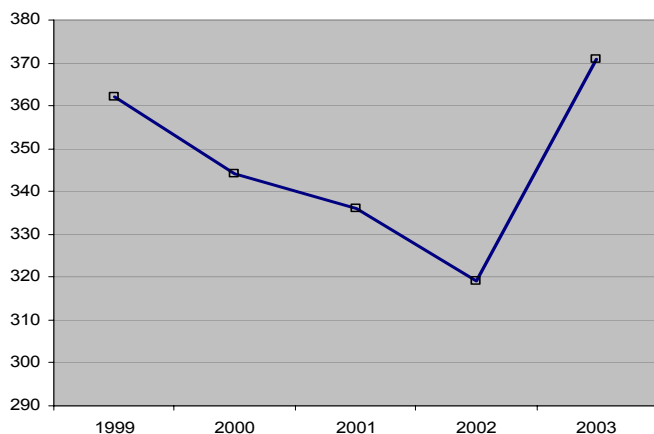
Top 5 Countries Represented in the U.S. (2003):

- India
- China
- Korea, Republic of
- Japan
- Taiwan

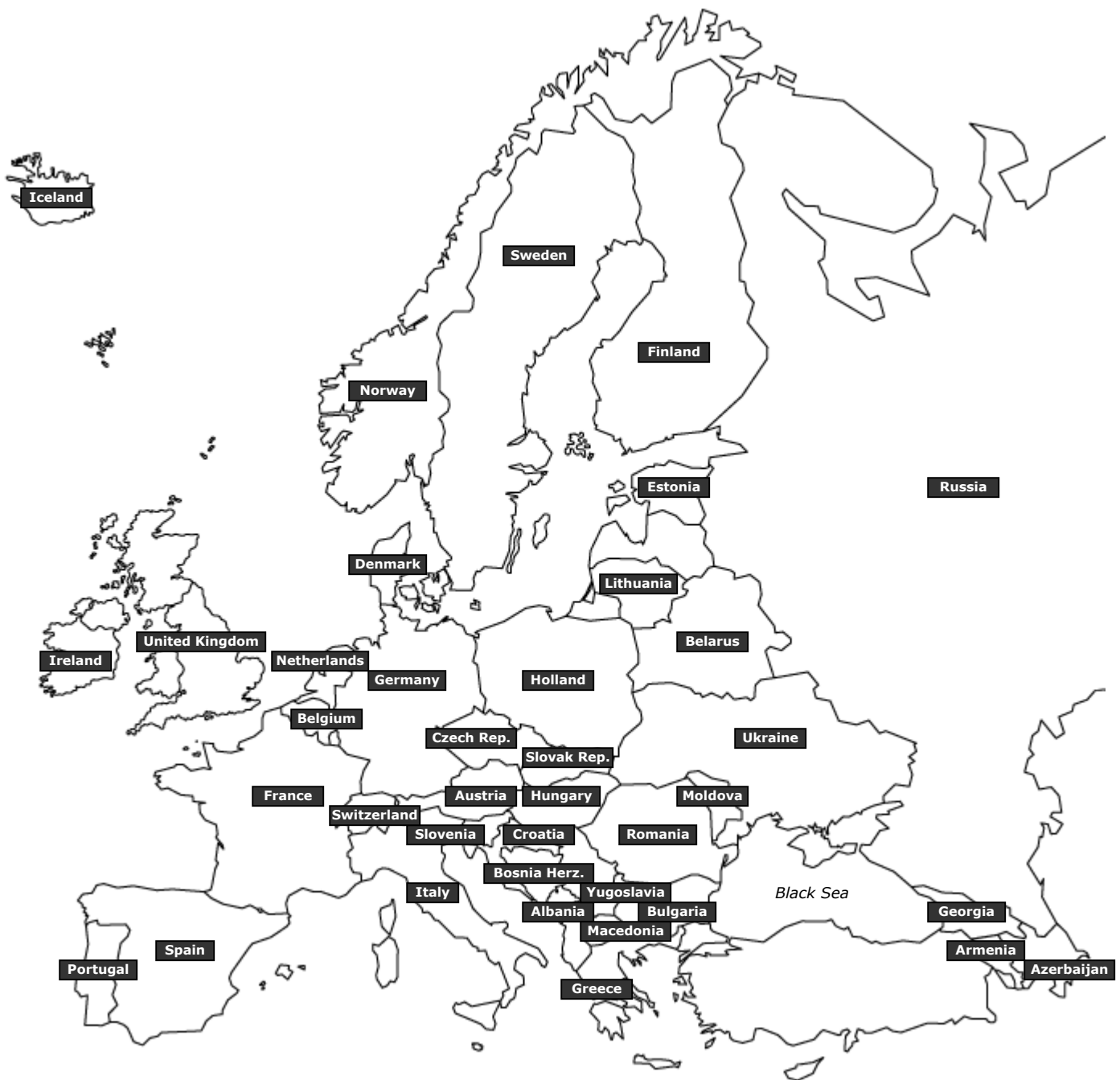
International Students by Country of Origin: EUROPE

Academic Years

	1999	2000	2001	2002	2003
Eastern Europe					
Albania	3	3	3	5	6
Armenia	0	0	0	2	3
Azerbaijan	0	0	1	0	1
Belarus	0	0	0	0	1
Bosnia-Herzegovina	0	1	1	1	1
Bulgaria	9	6	5	2	6
Croatia	1	2	2	0	3
Czech Republic	5	5	5	5	4
Estonia	1	1	2	1	1
Georgia	2	2	3	4	5
Hungary	6	5	6	4	5
Latvia	4	1	1	0	0
Macedonia	1	2	2	1	1
Moldova	0	0	0	1	2
Poland	7	7	9	12	10
Romania	17	24	22	20	20
Russia	39	38	37	36	41
Slovak Republic	2	1	3	3	5
Slovenia	0	2	2	3	5
Ukraine	6	5	9	10	12
Yugoslavia, Former	11	8	8	6	6
Western Europe					
Austria	1	3	3	3	2
Belgium	6	8	6	4	5
Denmark	7	17	8	7	8
Finland	0	2	4	2	3
France	20	14	17	29	29
Germany	68	60	51	33	57
Greece	12	14	13	19	19
Iceland	1	1	0	1	2
Ireland	11	9	9	6	8
Italy	12	17	18	16	11
Lithuania	0	0	0	1	2
Monaco	1	0	0	0	0
Netherlands	36	15	13	20	17
Norway	6	4	10	4	7
Portugal	3	0	3	1	2
Spain	26	22	15	13	14
Sweden	5	10	8	4	3
Switzerland	4	6	4	3	3
United Kingdom	29	29	33	37	41
	362	344	336	319	371



International Students by Country of Origin in Academic Year 2002 - 2003: EUROPE



Top 5 Countries Represented at MSU (2003):

- Germany
- Russia
- United Kingdom
- France
- Romania

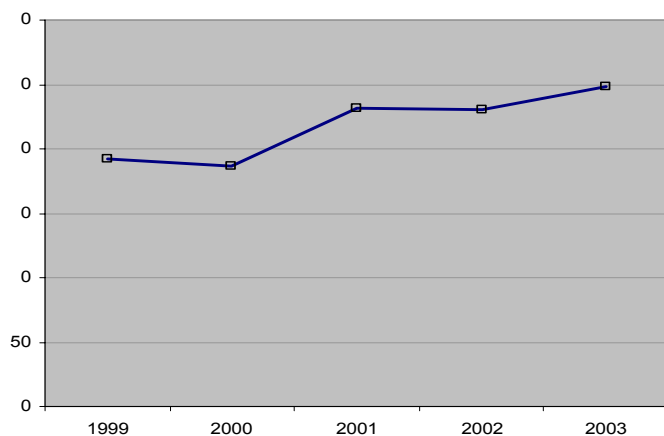
Top 5 Countries Represented in the U.S. (2003):

- Germany
- United Kingdom
- France
- Russia
- Bulgaria

International Students by Country of Origin: LATIN AMERICA

Academic Years

	1999	2000	2001	2002	2003
Caribbean					
Antigua and Barbuda	1	0	0	0	0
Bahamas	4	4	3	3	1
Barbados	0	1	1	2	2
Cayman Islands	1	1	2	0	0
Cuba	0	0	1	1	0
Dominican Republic	2	1	1	2	3
Haiti	1	1	1	2	1
Jamaica	5	5	7	9	18
Netherlands Antilles	0	0	1	1	1
Saint Lucia	0	1	2	2	2
Saint Vincent and the Grenadines	1	0	0	0	0
Trinidad and Tobago	4	3	3	3	3
Central America					
Costa Rica	6	7	5	2	6
Guatemala	2	3	3	7	6
Honduras	0	0	1	3	5
Mexico	24	29	41	31	36
Nicaragua	0	0	2	1	1
Panama	5	5	6	6	4
South America					
Argentina	9	20	18	13	19
Bolivia	1	1	1	2	2
Brazil	73	55	63	51	43
Chile	8	8	11	17	17
Colombia	15	16	14	15	20
Ecuador	3	6	13	20	19
Guyana	1	0	0	0	0
Paraguay	1	0	1	2	3
Peru	6	6	8	12	12
Uruguay	4	2	7	9	9
Venezuela	15	11	16	14	15
	192	186	232	230	248



International Students by Country of Origin in Academic Year 2002 - 2003: LATIN AMERICA



Top 5 Countries Represented at MSU (2003):

- Brazil
- Mexico
- Columbia
- Argentina
- Ecuador

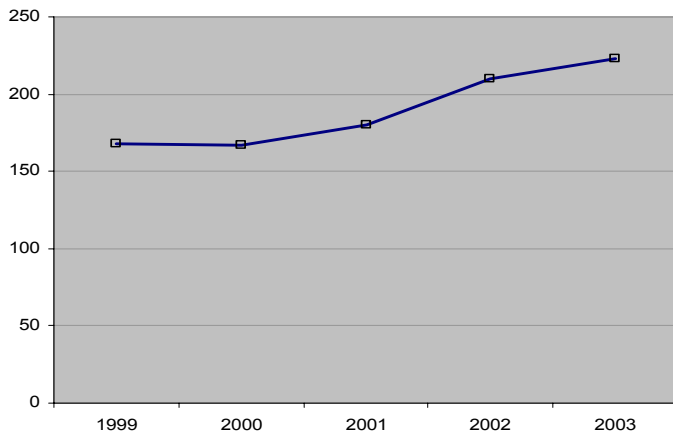
Top 5 Countries Represented in the U.S. (2003):

- Mexico
- Brazil
- Columbia
- Venezuela
- Jamaica

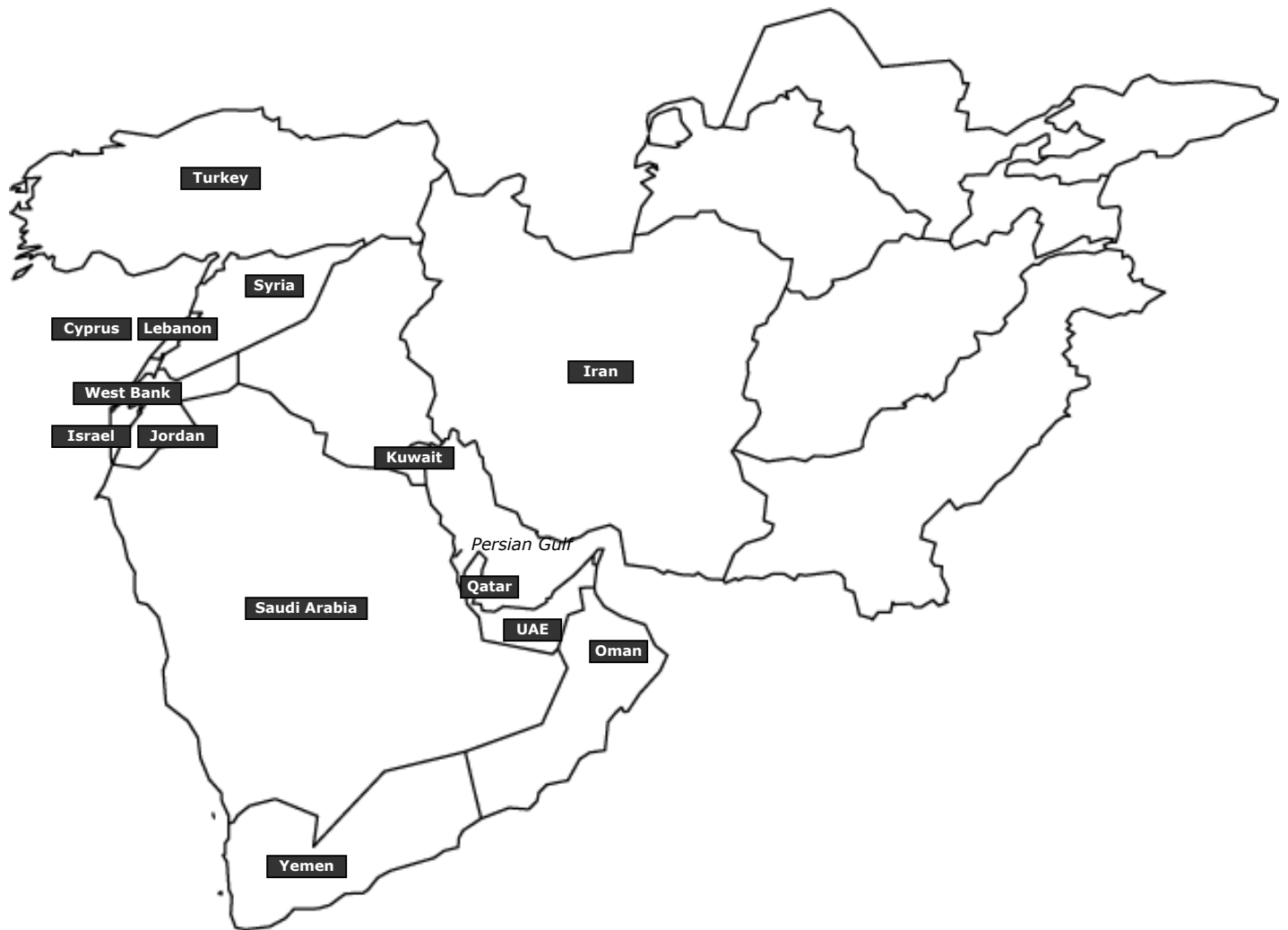
International Students by Country of Origin: MIDDLE EAST

Academic Years

	1999	2000	2001	2002	2003
Middle East					
Bahrain	2	6	1	0	0
Cyprus	12	14	10	8	6
Iran	7	7	14	20	24
Israel	4	3	4	5	11
Jordan	12	9	12	16	15
Kuwait	6	5	7	9	8
Lebanon	9	9	5	12	14
Oman	2	1	2	3	2
Qatar	2	2	5	5	4
Saudi Arabia	44	29	31	33	41
Syria	0	0	1	1	2
Turkey	60	74	77	84	83
United Arab Emirates	8	7	11	13	11
West Bank	0	0	0	1	1
Yemen	0	1	0	0	1
	168	167	180	210	223



International Students by Country of Origin in Academic Year 2002 - 2003: MIDDLE EAST



Top 5 Countries Represented at MSU (2003):

Turkey
Saudi Arabia
Iran
Jordan
Lebanon

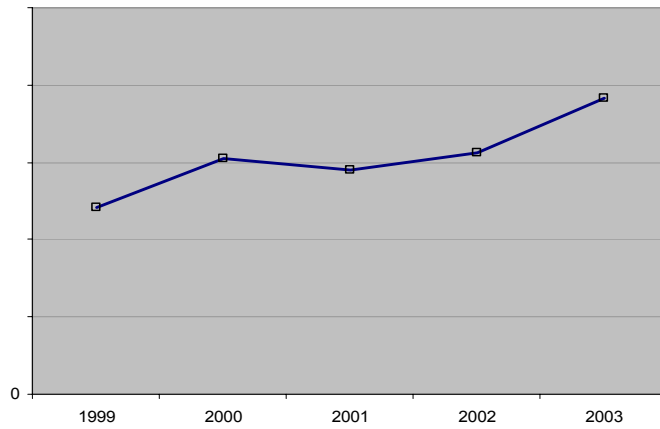
Top 5 Countries Represented in the U.S. (2003):

Turkey
Saudi Arabia
Israel
Lebanon
Iran

International Students by Country of Origin: North America

Academic Years

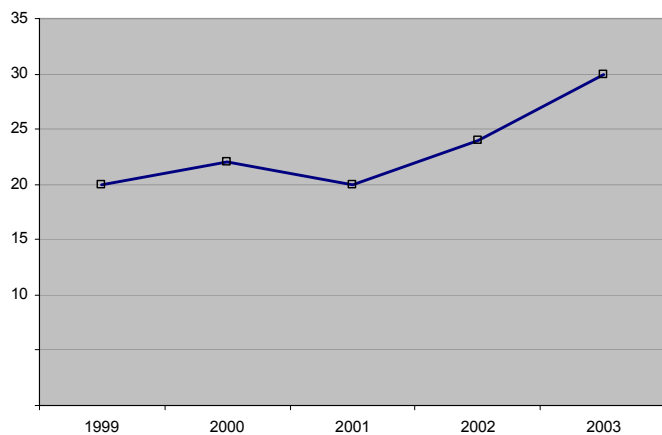
	1999	2000	2001	2002	2003
North America					
Canada	121	152	145	156	191



International Students by Country of Origin: Oceania

Academic Years

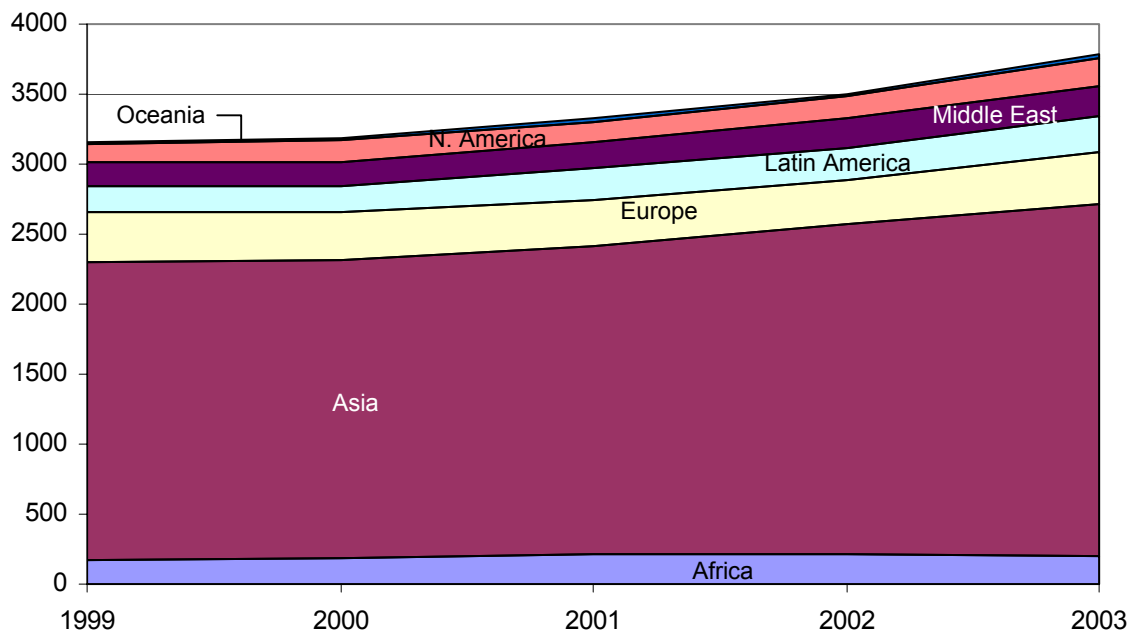
	1999	2000	2001	2002	2003
Oceania					
Australia	17	16	14	15	23
Kiribati	0	1	0	0	0
New Zealand	3	5	6	9	7
	20	22	20	24	30



International Students by Regional Population Trend

Region	Academic Years					% Change 1999	% Change 2002
	1999	2000	2001	2002	2003		
Africa	175	183	221	208	194	9.8%	-7.2%
Asia	2119	2135	2189	2359	2525	16.1%	6.6%
Europe	362	344	336	319	371	2.4%	14.0%
Latin America	192	186	232	230	248	22.6%	7.3%
Middle East	168	167	180	210	223	24.7%	5.8%
North America	121	152	145	156	191	36.6%	18.3%
Oceania	20	22	20	24	30	33.3%	20.0%
	3157	3189	3323	3506	3782	16.5%	7.3%

Regional Population Trend



International Student Enrollment

Academic Profile

Academic Year 2002 - 2003

International Students by College, Major, and Level: Academic Year 2002 - 2003

College	Level of Study				Total
	Underg	Masters	Doctoral	Non-Deg	
Agriculture & Natural Resources	31	114	178	5	328
Agricultural & Extension Education		8	3		
Agricultural Economics		20	30		
Agribusiness Management	1				
Animal Science - Environmental Toxicology			1		
Animal Science	1	3	12		
Biosystems Engineering		2	6		
Building Construction Management		19			
Crop & Soil Science - Environmental Toxicology			2		
Crop & Soil Science	2	7	15		
Dairy Production				1	
Entomology		1	7		
Food Science - Environmental Toxicology			4		
Fisheries & Wildlife		1	7		
Food Industry Management	11				
Food Science	5	7	7		
Forestry			14		
Horticulture	5	12	12		
Integrated Pest Management		1			
Landscape & Nursery				2	
Packaging	5	20	14		
Plant Breeding & Genetics BOT		1	1		
Plant Breeding & Genetics CSS		2	5		
Plant Breeding & Genetics FOR			2		
Plant Breeding & Genetics HRT			1		
Park, Recreation & Tourism	1	6	23		
Resource Development - Urban Studies			2		
Resource Development		4	9		
Resource Development - Environmental Toxicology			1		
Turfgrass Management				2	
Arts & Letters	32	86	134	47	299
Arts & Letters - General	1				
Adult Language Learning		1			
American Studies		2	8		
Applied Spanish Linguistics		1			
Comparative Literature		2			
East Asian Language & Culture	1				
English Language Center				47	
English	1		21		
French		6			
French Language & Literature			5		
German Study		3	2		
Hispanic Literature		8			
Hispanic Cultural Studies			9		
History of Art		1			
History	1		12		
Linguistics	3	7	19		
Literature in English		1			
Music Conducting		2	7		
Music Composition		1	1		
Music Education		1	2		
Music Performance	7	19	44		
Music Therapy	6	2			
Philosophy	1		3		
Piano Pedagogy		3			
Russian Language & Literature			1		

	Undergrad	Masters	Doctoral	Non-Deg	
Russian		1			
Studio Art	11	4			
Teaching English to Speakers of Other Languages		21			
Business	334	153	90	0	577
Accounting	50		9		
Business Administration		80			
Economics	7	4	51		
Finance	52		9		
Food Service Management		9			
General Business Administration - Pre-law	10				
General Management	86				
Hospitality Business	43				
Human Resource Management	7				
Integrative Management		25			
Logistics		2	1		
Marketing	49		12		
Manufacturing & Engineering Management		1			
Operations & Sourcing Management			7		
Professional Accounting		32			
Supply Chain Management	30				
Strategic Management			1		
Communication Arts	117	131	26	0	274
Advertising	41	30			
Audiology & Speech Science		1			
Communication	19	12	6		
Comm. Arts & Sciences - Mass Media			20		
Comm. Urban Studies		2			
Health Communication		1			
Journalism	9	3			
Public Relations		24			
Telecommunication	48	57			
Telecommunication - Urban		1			
Education	6	97	100	0	203
Adult & Continuing Education		1			
Curriculum, Teaching, & Educational Psychology			26		
Counseling		4			
Counseling Psychology			3		
Curriculum & Teaching		30			
Education	1	4			
Education Policy			7		
Education Psychology			1		
Education Technology		5			
Higher & Adult Education		1	9		
K-12 Educational Administration		37	9		
Kinesiology	5	2	4		
Literacy Instruction		1			
Learning, Technology, & Culture			13		
Measurement & Quantitative Methods			21		
Rehabilitation Counseling		4			
Rehabilitation Counselor Education			4		
School Psychology			1		
Special Education		1	2		
Teaching & Learning with Technology		7			
Engineering	190	189	223	0	602
Chemical Engineering	10	3	19		
Civil Engineering	7	25	20		
Computer Engineering	36				

	Undergrad	Masters	Doctoral	Non-Deg	
Computer Science	60	50	66		
Engineering Arts	1				
Engineering Mechanics		1	6		
Engineering - No Preference	10				
Electrical Engineering	36	62	50		
Environmental Engineering - Environmental Toxicology			1		
Environmental Engineering		15	6		
Material Science & Engineering	1	5	13		
Mechanical Engineering	29	28	42		
Human Ecology	29	21	39	0	89
Apparel & Textile Design	4				
Apparel & Textiles		2			
Child Development		3			
Community Services		2			
Dietetics	3				
Family Community Service	4				
Family & Consumer Resources	1				
Family & Child Ecology			15		
Family Studies		4			
Human Environment Design & Management			14		
Human Nutrition		4	10		
Interior Design	10				
Interior Design & Management		3			
Marriage & Family Therapy		1			
Merchandise Management	7	2			
Human Medicine	0	10	11	1	22
Biochemistry & Molecular Biology			6		
Human Medicine Post Doctoral				1	
Epidemiology		10	1		
Human Medicine			3		
Physiology			1		
James Madison	5	0	0	0	5
International Relations	5				
James Madison No Major					
Lifelong Education	0	0	0	534	534
High School Guest					
Lifelong Education					
Off-Campus					
MSU Detroit College of Law	0	0	0	5	5
Natural Science	86	74	396	1	557
Applied Mathematics		2	17		
Applied Statistics		6			
Astrophysics & Astronomy			6		
Astrophysics	2				
Biochemistry & Molecular Biology/Biotechnology	15				
Biochemistry & Molecular Biology/Environmental Toxicology			2		
Biological Science, Interdepart.	2				
Biochemistry & Molecular Biology	6	4	14		
Botany & Plant Pathology			1		
Cell & Molecular Biology			19		
Chemistry	2	3	129		
Clinical Laboratory Science	2				
Chemistry - Environmental Toxicology			2		

	Undergrad	Masters	Doctoral	Non-Deg 1	
Natural Science - Post Doctoral					
Computational Chemistry	1				
Computational Mathematics	2				
Environmental Biology/Microbiology	1				
Entomology			3		
Environmental Geosciences			1		
Genetics		2	26		
Geological Science	1	2			
Human Biology	9				
Industrial Microbiology		2			
Industrial Mathematics		10			
LBS Biochemistry	1				
LBS Human Biology	1				
LBS Zoology	1				
LBS - No Coordinate Major	3				
Mathematics Education			1		
Mathematics	6	5	51		
Medical Technology	4				
Microbiology	4				
Microbiology & Molecular Genetics			15		
Natural Science - No Preference	1				
Neuroscience			4		
Operations Research - Statistics		1			
Physics	6	8	68		
Physiology	2		3		
Plant Biology			9		
Pre-dental	2				
Premedical	6				
Statistics	2	26	15		
Zoology	4	3	10		
Nursing	2	0	0	0	2
Pre-nursing	2				
Osteopathic Medicine	0	0	3	3	6
Biochemistry/Molecular Biology			1		
Osteopathic Medicine - Post Doctoral				3	
Osteopathic Medicine			1		
Pharmacology & Toxicology			1		
Social Science	69	84	69	0	
Anthropology	1	1	4		
Clinical Social Work		6			
Criminal Justice	4	8	3		
Economics	19	6	10		
Forensic Science		1			
Geographic Information Science		4			
Geography	1	6	8		
Interdisciplinary Studies in Soc. Sci. - Community Relations	1				
Interdisciplinary Studies in Soc. Sci. - Human Resources in Society	8				
Interdisciplinary Studies in Soc. Sci. - Health Studies	1				
Interdisciplinary Studies in Soc. Sci. - International Studies	7				
Labor Relations & Human Resources		14			
Public Administration & Public Policy	1				
Policy & Applied Economics	2				
Political Science - Pre-law	3				
Political Science	1		14		
Psychology	13	2	4		

	Undergrad	Masters	Doctoral	Non-Deg	
Public Administration		10			
Interdisciplinary Studies in Soc. Sci. - Global Applications		22			
Social Science - Social Work			2		
Social Science - Criminal Justice			3		
Social Science - Industry Human Relations			2		
Sociology	6	1	15		
Sociology - Urban Studies			4		
Urban Region	1				
Urban & Regional Planning		3			
Undecided		0	0	0	25
Veterinary Medicine	1	6	23	2	32
Comparative Medicine & Integrative Biology		1	5		
Veterinary Medicine Post Doctoral				2	
Food Safety		1			
Large Animal Clinical Sciences		3	6		
Microbiology			1		
Pathology		1	6		
Pharmacology & Toxicology			1		
Physiology			1		
Pre-veterinary	1				
Veterinary Medicine			3		

International Students by College Enrollment Trend

Academic Years

College	1999	2000	2001	2002	2003	% Change from 1999	% Change from 2002
Agriculture & Natural Res.	296	278	304	310	328	10.8%	5.8%
Arts & Letters	326	324	322	338	299	-8.3%	-11.5%
Business	531	500	507	533	577	8.7%	8.3%
Communication Arts	264	279	264	261	274	3.8%	5.0%
Education	164	162	181	186	203	23.8%	9.1%
Engineering	539	535	559		602		2.0%
Human Ecology	72	80	86	86	89	23.6%	3.5%
Human Medicine	18	15	16	18	22	22.2%	22.2%
James Madison	7	5	3	1	5	-28.6%	400.0%
Lifelong Education	314	322	384	381	534	70.1%	40.2%
MSU Detroit College of Law	1	1	1	2	5	400.0%	150.0%
Natural Science	388	457	438	548	557	43.6%	1.6%
Nursing	3	2	2	0	2	-33.3%	-
Osteopathic Medicine	12	10	7	8	6	-50.0%	-25.0%
Social Science	175	172	194	196	223	27.4%	13.8%
Undecided	32	28	32	25	24	-25.0%	-4.0%
Veterinary Medicine	15	19	23	23	32	113.3%	39.1%
	3157	3189	3323	3506	3782	19.8%	7.9%

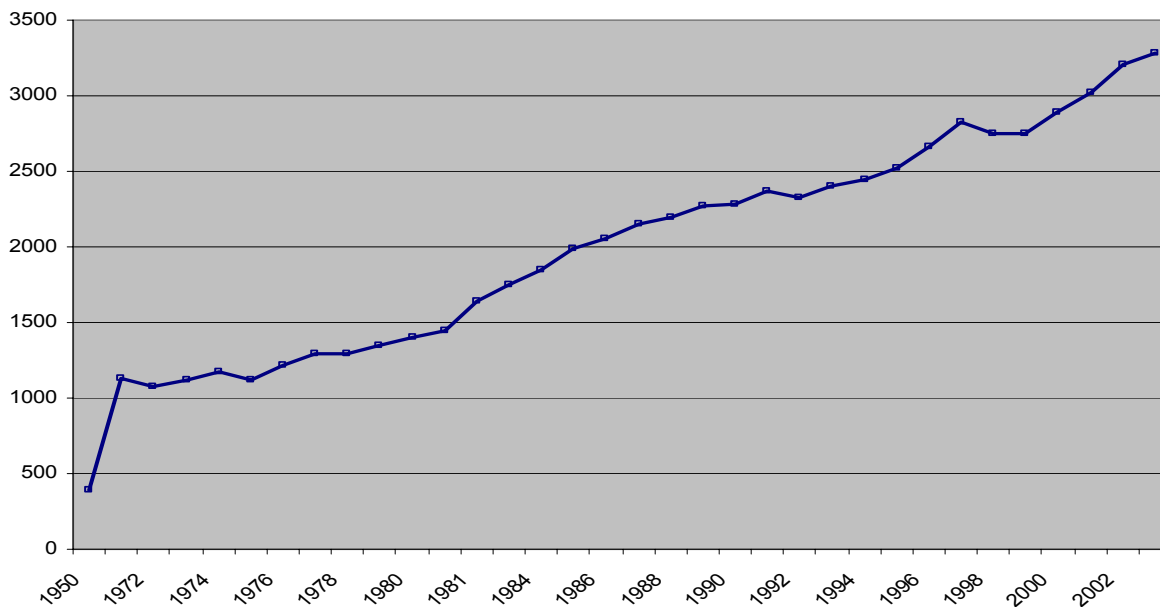
International Student Enrollment

Comparative Data

International Student Enrollment: FALL 1950 - 2003

Year	Undergrad	Master	Doctoral	Total	% Total MSU
1950	-	-	-	390	2.5%
1971	197	568	367	1132	2.7%
1972	227	500	352	1079	2.6%
1973	292	474	357	1123	2.7%
1974	284	533	355	1172	2.7%
1975	207		377	1124	2.5%
1976	246	534	432	1212	2.8%
1977	276	529	488	1293	2.9%
1978	268	522	501	1291	3%
1979	295	536	516	1347	3%
1980	302	559	545	1406	3.1%
1981	330	614	506	1450	3.4%
1981	415	676	548	1639	4%
1983	470	678	599	1747	4.4%
1984	510	670	673	1853	4.6%
1985	546	672	767	1985	4.8%
1986	477	730	844	2051	4.9%
1987	462	801	885	2148	5.1%
1988	491	815	895	2201	5.2%
1989	435	872	963	2270	5.3%
1990	442	852	988	2282	5.3%
1991	468	866	1038	2372	5.6%
1992	463	853	1006	2322	5.8%
1993	532	807	1067	2406	6.1%
1994	672	778	994	2444	6.1%
1995	793	753	975	2521	6.2%
1996	867	830	967	2664	6.4%
1997	977	878	968	2823	7.1%
1998	911	834	1002	2747	6.8%
1999	847	845	1056	2748	6.4%
2000	906	889	1093	2888	6.7%
2001	923	951	1147	3021	6.8%
2002	963	986	1253	3202	7.1%
2003	1046	936	1296	3278	7.4%

International Student Enrollment Trendline: FALL 1950 - 2003

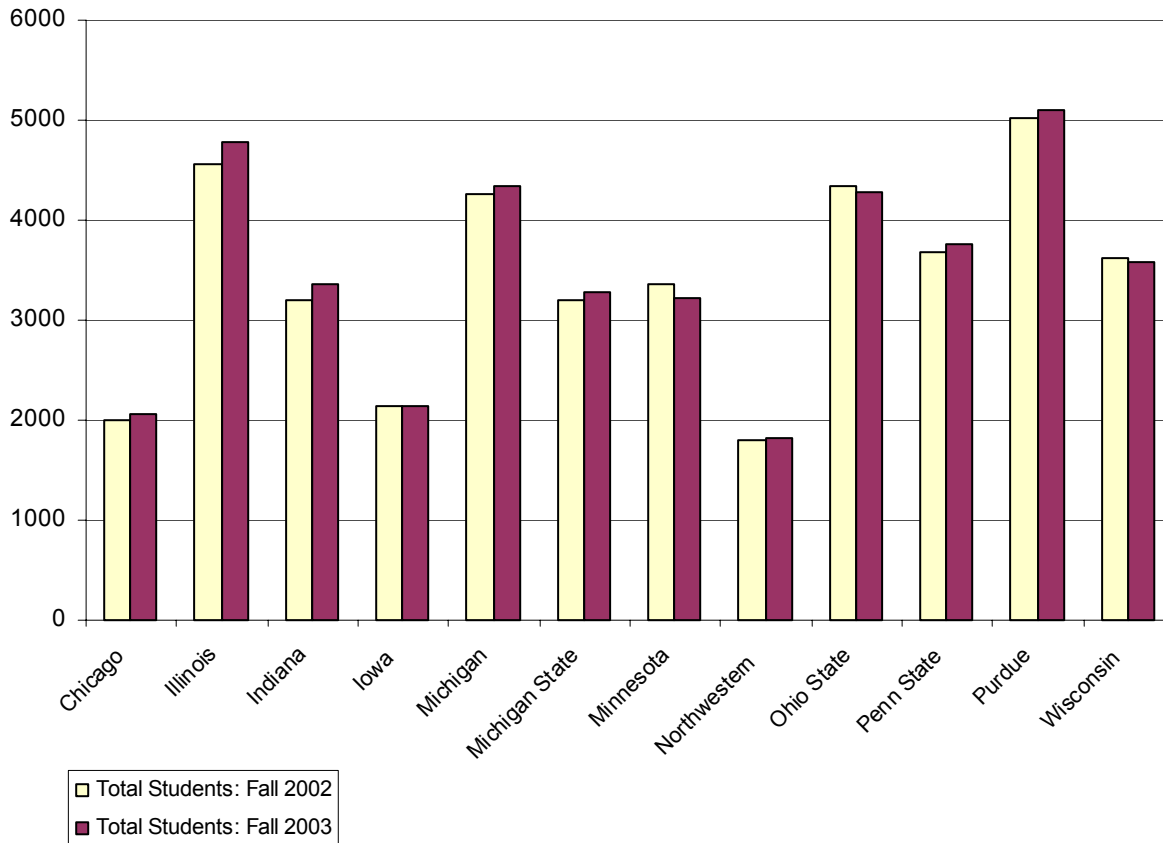


***CIC International Students Comparative Data**

University	New Students FALL 2002	New Students FALL 2003	% Change New Students	Total Students FALL 2002	Total Students FALL 2003	% Change Total Students
Chicago	650	677	4.2	1999	2062	3.2%
Illinois	1346	1342	-0.3	4555	4778	4.9%
Indiana	842	873	3.5	3204	3359	4.8%
Iowa	394	331	-16	2142	2139	-0.1%
Michigan	1392	1332	-0.4	4261	4348	2.0%
Michigan State	790	803	1.6	3202	3278	2.4%
Minnesota	832	757	-9	3351	3230	-3.6%
Northwestern	616	635	1	1810	1827	0.9%
Ohio State	875	750	-14.7	4342	4274	-1.6%
Penn State	1084	939	-13.4	3686	3762	2.1%
Purdue	1255	1077	-14.2	5015	5094	1.6%
Wisconsin	639	680	6.4	3614	3580	-0.9%

*Consortium for International Cooperation

CIC Total International Student Enrollment



International Scholar Population

By Country

Regional Trends

1999 - 2003

(July 01 - June 30)

International Scholars Population Trend by Country

July 01 - June 30

Country	1999	2000	2001	2002	2003
Algeria	1	2	1	4	0
Argentina	5	3	4	0	3
Armenia	2	1	1	0	1
Australia	8	10	11	8	6
Austria	1	3	1	2	2
Azerbaijan	1	0	0	0	0
Bangladesh	2	0	3	4	1
Barbados	0	0	2	0	0
Belarus	0	2	1	0	1
Belgium	1	3	1	5	8
Bosnia	0	1	0	0	0
Brazil	9	14	26	26	18
Bulgaria	4	2	3	3	1
Cameroon	2	2	3	3	2
Canada	34	40	40	49	43
Chile	2	1	5	6	4
China	110	115	110	132	118
	5	3	3	4	5
Comoros	0	1	0	0	1
Congo	0	0	1	2	1
Costa Rica	0	0	0	3	2
Cote D'Ivoire	0	1	1	0	1
Croatia	1	1	0	1	0
Cuba		0	0		0
Cyprus	1	3	2	1	0
Czech Republic	4	3	5	5	3
Denmark	5	8	4	4	3
Ecuador	0	0	0	2	1
Egypt	10	8	6	2	5
Ethiopia	1	1	2		4
Finland	3	3	1	1	1
France	30	25	26	24	16
Georgia	0	0	0	0	1
Germany	26	32	30	26	21
Ghana	0	0	2	4	1
Greece	6	2	4	2	0
Guatemala	2	0	0	0	1
Guyana	1	0	0	1	0
Haiti	0	0	1	1	1
Honduras	0	0	1	1	1
Hong Kong	2	3	5	1	1
Hungary	15	18	28	29	10
Iceland	0	1	1	1	1
India	39	44	69	74	56
Indonesia	2	1	4	1	1
Iran	2	5	6	4	3
Ireland	1	0	2	3	3
Israel	5	6		2	6
Italy	14	13	12	12	7
Jamaica	2	3	1	0	1
Japan	36	39	44	60	51
Jordan	3	1	1	4	1

	1999	2000	2001	2002	2003
Kazakhstan	0	1	0	1	0
Kenya	0	0	1	4	2
Korea	86	152	215	215	157
Latvia	1	4	7	11	9
Lebanon	3	4	1	2	1
Lithuania	0	0	1	1	0
Macedonia	0	0	1	0	1
Malaysia	3	1	3	3	2
Mali	0	0	1	1	1
Mauritius	0	0	0	1	0
Mexico	4	6	5	4	7
Moldova	0	0	2	1	1
Morocco	1	0	0	1	1
Namibia	0	0	1	0	0
Nepal	2	2	3	2	0
Netherlands	8	14	12	9	7
New Zealand	6	5	6	3	2
Nicaragua	0	0	0	0	1
Niger	0	0	0	0	1
Nigeria	3	3	5	4	3
Norway	1	2	3	4	1
Pakistan	7	3	2	3	0
Palestine	0	1	1	0	0
Panama	1	0	1	1	0
Paraguay	0	0	0	0	1
Peru	2	1	0	0	0
Philippines	3	3	2	4	3
Poland	5	8	5	5	9
Portugal	0	4	1	2	0
Romania	7	5	12	6	5
Russia	18	21	28	20	16
Saint Vincent	1	1	0	0	0
Saudi Arabia	4	4	3	1	1
Senegal	1	0	0	1	1
Serbia	0	0	1	1	0
Sierra Leone	0	2	0	0	0
Singapore	0	1	1	0	0
Slovak Republic	2	2	2	2	4
Slovenia	0	0	2	0	0
South Africa	5	17	15	3	4
Spain	15	7	13	11	10
Sri Lanka	0	1	3	1	0
Suriname	1	1	1	1	0
Sweden	13	6	6	6	2
Switzerland	1	2	2	2	5
Syria	2	0	1	1	0
Taiwan	15	14	17	20	17
Tanzania	1	0	1	0	0
Thailand	0	7	6	4	2
Trinidad & Tobago	1	0	2	2	1
Tunisia	3	0	1	1	0
Turkey	14	8	11	17	42
Uganda	1	2	0	0	1
Ukraine	5	6	10	5	2

	1999	2000	2001	2002	2003
United Arab Emirates	1	0	0	0	0
United Kingdom	15	20	15	12	17
Uruguay	0	0	0	3	2
Venezuela	0	0	1	2	1
Vietnam	1	0	1	7	3
Yugoslavia	0	0	0	1	1
Zambia	0	1	0	0	1
Zimbabwe	2	3	5	2	0
	665	769	919	935	766

International Scholar Enrollment

By College/Department

2002 - 2003

(July 01 - June 30)

International Scholar Enrollment by College/Department

Department/College	Total	% MSU Scholars
Accounting	2	0.3%
Accounting & Finance	2	0.3%
Accounting & Information Services	1	0.1%
Ag Extension	1	0.1%
Agricultural & Food Products	3	0.4%
Agricultural Business	1	0.1%
Agricultural Economics	9	1.2%
Agriculture	3	0.4%
Animal Health Diagnostic Laboratory	1	0.1%
Animal Science	18	2.3%
Anthropology	1	0.1%
Arts & Letters	7	0.9%
Asian Studies Center	1	0.1%
Athletics	1	0.1%
Biochemistry	40	5.2%
Botany & Plant Pathology	5	0.7%
Business Admin & Management	1	0.1%
Business Administration & Management	1	0.1%
Center for Advanced Study of International Dev.	1	0.1%
Center for Integrative Studies in Arts & Humanities	2	0.3%
Center for Latin American & Caribbean Studies Center	1	0.1%
Center for Microbial Ecology	10	1.3%
Center for Sensor Materials	2	0.3%
Center for Urban Affairs Community & Economic Dev.	1	0.1%
Chemical Engineering	9	1.2%
Chemistry	27	3.5%
Civil & Environmental Engineering	6	0.8%
College of Education	1	0.1%
College of Human Medicine	1	0.1%
College of Veterinary Medicine	1	0.1%
Composite Materials & Structures Center	10	1.3%
Computer Science & Engineering	3	0.4%
Counseling Center	2	0.3%
Counseling, Ed Psych & Spec Education	4	0.5%
Crop & Soil Science	10	1.3%
Data Coordinating Center	1	0.1%
DCL Business library	1	0.1%
Developmental & Child Psychology	1	0.1%
Ecology	3	0.4%
Economy	11	1.4%
Education Evaluate	1	0.1%
Educational Psychology	1	0.1%
Electrical & Computer Engineering	16	2.1%
Electrical Engineering	4	0.5%
English	1	0.1%
English Language Center	5	0.7%
Entomology	10	1.3%
Epidemiology	2	0.3%
Family Practice Medicine	1	0.1%
Fashion Apparel/Design	1	0.1%
Finance	1	0.1%
Fisheries & Wildlife	7	0.9%

	Total	% MSU Scholars
Food Safety	1	0.1%
Food Science & Human Nutrition	8	1.0%
Forensic Science & Technology	1	0.1%
Forestry	5	0.7%
Genomics Technology Support Facility	2	0.3%
Geography	1	0.1%
Germanic Language	1	0.1%
History	1	
Horticulture	25	3.3%
Human Ecology	1	0.1%
Human Environmental & Design	2	0.3%
Human Medicine	1	0.1%
Human Medicine, ECHT Computer Center	1	0.1%
Human Resources Information Services	1	0.1%
Institute of Environmental Toxicology	2	0.3%
Institute of Health Care Studies	1	0.1%
Institute of International Agriculture	14	1.8%
Institute of International Education	1	0.1%
Institute of Water Research	1	0.1%
Integrated Pest Management Program	1	0.1%
Intercollegiate Athletics	2	0.3%
Intercultural Studies	2	0.3%
Intercultural/Multicultural Studies	3	0.4%
International Business Center	30	3.9%
International Relations & Affairs	3	0.4%
International Studies & Programs	4	0.5%
International Studies & Programs- SHIGA	1	0.1%
International Studies in Education	2	0.3%
Institute for Public Policy & Social Research	2	0.3%
Jewish Studies	2	0.3%
Journalism	7	0.9%
Kellogg Biological Station	4	0.5%
Kinesiology & Exercise Science	1	0.1%
Kresege Art Museum	1	0.1%
Labor & Industrial Relations	2	0.3%
Language Learning Center	1	0.1%
Large Animal Clinical Sciences	8	1.0%
Linguistics & Languages	50	6.5%
Linguistics Society of America Institute	1	0.1%
Lyman Briggs School	1	0.1%
Management	1	0.1%
Marketing & Supply Chain Management	5	0.7%
Material Sciences & Mechanics	1	0.1%
Mathematics	31	4.0%
Mathematics Teacher Education	1	0.1%
Mechanical Engineering	13	1.7%
Medicine	3	0.4%
Microbiology	2	0.3%
Microbiology & Molecular Genetics	4	0.5%
MSU Extension	4	0.5%
MSU Indoor Tennis Facility	1	0.1%
MSU Libraries	2	0.3%
MSU Museum	1	0.1%
MSU Press	1	0.1%

	Total	% MSU Scholars
MSU-Detroit College of Law	1	0.1%
Music	1	0.1%
National Superconducting Cyclotron Laboratory	16	2.1%
National Food Safety & Toxicology Center	6	0.8%
Natural Resources	1	0.1%
Neuro-Ophthalmology	1	0.1%
Neuroscience Program	2	0.3%
Nursing	1	0.1%
Nutrition Science	1	0.1%
Packaging	1	0.1%
Pathobiology & Diagnostic Investigation	3	0.4%
Pediatrics & Human Development	3	0.4%
Pharmacology & Toxicology	10	1.3%
Physical Medicine & Rehabilitation	1	0.1%
Physical Plant	1	0.1%
Physics & Astronomy	14	1.8%
Physiology	13	1.7%
Plant Biology	9	1.2%
Plant Pathology	5	0.7%
Plant Research Laboratory	9	1.2%
Political Science	2	0.3%
Psychiatry	1	0.1%
Psychology	6	0.8%
Residence Life	1	0.1%
Resource Development	2	0.3%
Romance & Classical Languages	1	0.1%
School of Criminal Justice	3	0.4%
School of Criminal Justice/Police Science	1	0.1%
School of Music	4	0.5%
School of Packaging	3	0.4%
Small Animal Clinical Sciences	11	1.4%
Social Psychology	1	0.1%
Sociology	3	0.4%
Statistics & Probability	7	0.9%
Structural Engineering	1	0.1%
Talent Search Program	1	0.1%
Teacher Education	3	0.4%
Telecommunication	3	0.4%
TESOL	1	0.1%
Tourism/ Travel Management	1	0.1%
Travel, Tourism & Recreation Res.	1	0.1%
University Outreach	1	0.1%
Urban & Regional Planning	2	0.3%
Veterinary Medicine	1	0.1%
Veterinary Pathology	1	0.1%
Visiting International Professional Program	79	10.3%
Zoology	2	0.3%



MICHIGAN STATE
UNIVERSITY

Office for International Students and Scholars

103 International Center
East Lansing, MI 48824 – 1035
Phone: (517) 353-1720
Fax: (517) 355-4657
Email: oiss@msu.edu
Web: <http://www.msu.edu/oiss>

